

CROSBY PRIMARY SCHOOL - MARCH 2023

If you have any queries about anything please ask

Phone 01724 844216 or email

admin.crosbyprimary@northlincs.gov.uk



Welcome to the March edition of our monthly newsletter

As we fast approach the Easter holidays, I am sure we are looking forward to the lighter nights and the emergence of spring flowers. The children have worked exceptionally hard this term and we all very much enjoyed celebrating World Book Day . Thank you for your continued support.

Sarah Buckley, Headteacher



INTRODUCING THE PASTORAL TEAM

Our wonderful pastoral team is a pivotal part of Crosby Primary, they are here to ensure that all children and families are happy, safe and have a sense of belonging to our school community. All of the team work together to identify and remove any barriers to education, using targeted approaches in the following areas: **Social, Emotional, Behavioural, Academic and Mental Health**. If you would like more information on these five areas or a deeper insight into how support can be accessed, please see our school website.

Tina George - Attendance Assistant

Tina is new to the team and will be assisting with daily attendance of the children, she supports members of senior leadership team to ensure pupils attend school as regularly as possible to ensure the best education.

Jeni Holt - Behaviour Lead

Our expert on supporting children through difficulties with their behaviour, she supports parents, staff and children to find the most effective ways to enable all children to access learning.

Suzanne Parker - Learning Mentor

Suzanne supports social emotional and mental wellbeing with specialist training in emotional literacy, bereavement, anxiety and mental health first aid. Working with support agencies such as the Neurodiversity Team, CAMHS, Educational Psychologists, With Me In Mind and Children's Services.

Michelle Allcock - Family Support Worker

Michelle is our fabulous Family Support Worker, she plays a crucial role in safeguarding our children and keeping them and their families safe. She is also the vital link between families, school and pupils.



From left to right: Tina George, Jeni Holt, Suzanne Parker, Michelle Allcock

CROSBY SCHOOL FULLY RECOGNISES ITS RESPONSIBILITIES FOR SAFEGUARDING AND PROMOTING THE HEALTH AND WELL-BEING OF ALL THE CHILDREN IN ITS CARE.

CHILDREN'S ABSENCES FROM SCHOOL ARE AUTHORISED ONLY IN EXCEPTIONAL CIRCUMSTANCES. CONSENT MUST BE SOUGHT BEFORE YOU TAKE YOUR CHILD OUT OF SCHOOL.

SCHOOL ATTENDANCE

Best attendance winners : Well done !

Week Commencing	23rd January:	Ash	97%
Week Commencing	30th January:	Falcon	98%
Week Commencing	6th February:	Hedgehog	97%
Week commencing	10th February:	Rabbit	100%
Week commencing	24th February:	Kestrel	98%
Week commencing	3rd March:	Kestrel	97%

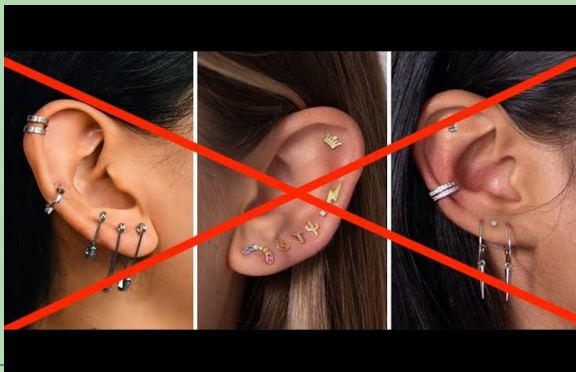


LEARNING LOST THROUGH ABSENCE

Description	Threshold Attendance	Actual Attendance	Whole Days Absent	Learning Hours Lost
Excellent	100%	190	0 days	0
Good	98%	186 days	4	20
Satisfactory	95%	180.5 days	9.5	47.5
Cause for Concern	90%	171 days	19	95
Unsatisfactory	88%	167 days	23	115
Serious Cause For Concern	85%	161.5	28.5	142.6

- Our attendance expectation for all children is 100%.
- Our school attendance is currently 89%, which is a cause for concern.
- Pupils whose attendance is below 90% is classed as Persistent Absence.
- Pupils attendance below 50% is severe.
- Persistent absence is a serious problem.
- Much of the work children miss when they are off school is never made up, leaving them at a considerable disadvantage to their peers.

EARRINGS



It is our current school policy that no earrings should be worn at school, so please **DO NOT** send your child to school wearing earrings.

CROSBY SCHOOL FULLY RECOGNISES ITS RESPONSIBILITIES FOR SAFEGUARDING AND PROMOTING THE HEALTH AND WELL-BEING OF ALL THE CHILDREN IN ITS CARE.

CHILDREN'S ABSENCES FROM SCHOOL ARE AUTHORISED ONLY IN EXCEPTIONAL CIRCUMSTANCES. CONSENT MUST BE SOUGHT BEFORE YOU TAKE YOUR CHILD OUT OF SCHOOL.

EVENTS

Red Nose Day 2023

We are collecting Donations for Comic Relief Red Nose Day 2023 please click on the link below—you do not need a ParentPay account to donate :

<https://app.parentpay.com/ParentPayShop/Foc/Default.aspx?shopid=>



FRIDAY

17 MARCH

Children can come to school wearing something RED !



We're Going to Find the Monster - Reception Reading event:

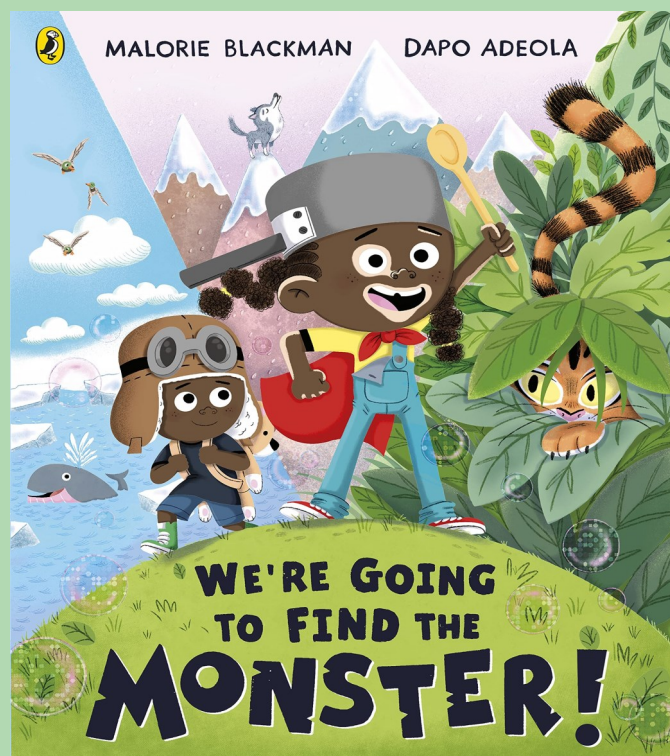
Well known Development Officer within North Lincolnshire, Sarah Tipler, will be joining us to celebrate the importance of reading on :

Wednesday 22nd March 9:00 - 10:30.

She will be leading a reading workshop for parents, followed by a special story time with the children and activities for parents and children to share, linked to the story 'We're Going to find the Monster.'

All children will then be given their own book to take home and share with their families, after this exciting event.

See letter from class teacher for more information



CROSBY SCHOOL FULLY RECOGNISES ITS RESPONSIBILITIES FOR SAFEGUARDING AND PROMOTING THE HEALTH AND WELL-BEING OF ALL THE CHILDREN IN ITS CARE.

CHILDREN'S ABSENCES FROM SCHOOL ARE AUTHORISED ONLY IN EXCEPTIONAL CIRCUMSTANCES. CONSENT MUST BE SOUGHT BEFORE YOU TAKE YOUR CHILD OUT OF SCHOOL.

EVENTS

FUELLED

Does your child receive free school meals?.

This Easter 2023 holidays **Fuelled Holiday Activity Food** programme is here to provide a range of activities for your child such as dance, football, beatboxing, horse riding and more. There is no charge for activities or meals.

Choose from daily activities, weekly camps and family workshops . For more information and to register go [Fuelled - holiday activities and food programme - North Lincolnshire Council \(northlincs.gov.uk\)](https://northlincs.gov.uk) to book your activity.

If you think that your child is eligible for free school meals but have not yet applied please contact the school office.

Please see below some of the free courses being offered by <https://northlincsadulteducation.co.uk/>



JUST LEARN | ADULT EDUCATION & COMMUNITY LEARNING

- Maths & English
- Business/Office Skills
- Digital/Computer Skills
- Health & Wellbeing
- ESOL (English for Speakers of Other Languages)
- Work with Children
- Work Skills
- Community & Family Learning
- Plus Distance Learning Options

northlincsadulteducation.co.uk Tel: 01724 297146

CROSBY SCHOOL FULLY RECOGNISES ITS RESPONSIBILITIES FOR SAFEGUARDING AND PROMOTING THE HEALTH AND WELL-BEING OF ALL THE CHILDREN IN ITS CARE.

CHILDREN'S ABSENCES FROM SCHOOL ARE AUTHORISED ONLY IN EXCEPTIONAL CIRCUMSTANCES. CONSENT MUST BE SOUGHT BEFORE YOU TAKE YOUR CHILD OUT OF SCHOOL.

UPDATES

twitter

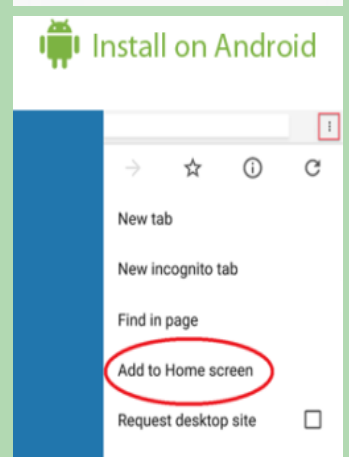
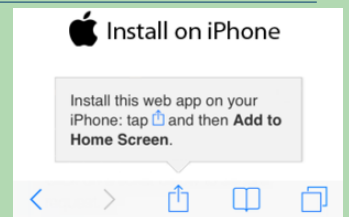


Good news, our school Twitter is now up and active! Posts about the school, photos of work, photos of children (who consent) and other key information, including any planned or unplanned school closures, will be regularly uploaded.

Please follow us on @Crosbyprimary to see what we get up to!



Use our new APP to quick view the website. Find term dates, the latest news and upcoming events. Install on iPhone by opening <https://crosbyprimary.co.uk/web-app> on your phone and following these instructions:



For Android, open <https://crosbyprimary.co.uk/web-app> on your phone follow these instructions:



Gardening club



Would like to say a huge thank you to Wickes for their generous donation!!”

If you have any spare bags of compost or soil we would be grateful for any donations to the Gardening Club, so the children can enjoy growing some seeds, this spring.



CROSBY SCHOOL FULLY RECOGNISES ITS RESPONSIBILITIES FOR SAFEGUARDING AND PROMOTING THE HEALTH AND WELL-BEING OF ALL THE CHILDREN IN ITS CARE.

CHILDREN'S ABSENCES FROM SCHOOL ARE AUTHORISED ONLY IN EXCEPTIONAL CIRCUMSTANCES. CONSENT MUST BE SOUGHT BEFORE YOU TAKE YOUR CHILD OUT OF SCHOOL.




You can vote for Crosby Primary School in Tesco stores for the chance for us to receive a Tesco Community Grant, this would enable us to create an outdoor area for the Reception children. You can vote at large Tesco Extra in Scunthorpe, Tesco Express in Ashby, Lichfield Avenue and at Crowle.

The project with the highest number of votes across our region will receive £1,500, the second placed project £1,000 and the third placed project £500.

It starts first week of April. Please vote - any size purchase will allow you to take a token to vote.



Spring Term Diary Dates

Date	Event
Tuesday 14 th March 2023	International Maths Day
Wednesday 15th March 2023	Strike disruption: Please see last page for affected classes
Thursday 16th March 2023	Strike disruption: Please see last page for affected classes
Friday 17 th March 2023	Red Nose Day - wear something RED
Wednesday 22 nd March 2023	Year 3 visit to Scunthorpe United - see separate letter
Friday 24 th March 2023	Bring a decorated egg competition for Easter show us your creativity!
Monday 27 th March 2023	Year 5/6 Easter Assembly - parents welcome 9.15
Tuesday 28 th March 2023	Year 3/4 Easter Assembly - parents welcome 9.15am
Wednesday 29 th March	Year 1/2 Easter Assembly - parents welcome 9.15am
Thursday 30 th March 2023	9.15am Reception classes Easter Assembly - parent welcome 9.15am 11.00am—Morning Nursery Easter celebration - parents invited 2.30pm—Afternoon Nursery Easter celebration - parents invited

School Term Dates 2023

	School closes at 3:00pm	School opens
Easter	Friday 31 st March 2023	Tuesday 18 th April 2023

CROSBY SCHOOL FULLY RECOGNISES ITS RESPONSIBILITIES FOR SAFEGUARDING AND PROMOTING THE HEALTH AND WELL-BEING OF ALL THE CHILDREN IN ITS CARE.

CHILDREN'S ABSENCES FROM SCHOOL ARE AUTHORISED ONLY IN EXCEPTIONAL CIRCUMSTANCES. CONSENT MUST BE SOUGHT BEFORE YOU TAKE YOUR CHILD OUT OF SCHOOL.

REMINDERS

HEAD LICE

- Treat head lice as soon as you spot them.
- You should check everyone in the house and start treating anyone who has head lice on the same day.
- There's no need to keep your child off school if they have head lice
- If head lice are found, treat your child immediately before sending school or nursery.



Wet combing

Lice and nits can be removed by wet combing. You should try this method first.

You can buy a special fine-toothed comb (detection comb) online or from pharmacies to remove head lice and nits.

- wash hair with ordinary shampoo
- apply lots of conditioner (any conditioner will do)
- comb the whole head of hair, from the roots to the ends
- It usually takes about 10 minutes to comb short hair and 20 to 30 minutes for long, frizzy or curly hair.
- Do wet combing on days 1, 5, 9 and 13 to catch any newly hatched head lice.
- Check again that everyone's hair is free of lice on day 17.

Make Sunday nights—hair check night!!

Information for parents who have children in Ash Class

In the absence of Mrs J Potter, Miss T Robinson will be the class teacher until the Easter break.

NEU STRIKE ACTION : 15th & 16th MARCH

The following classes are closed on these dates:

Bumblebee	Dragonfly
Oak	Badger
Hedgehog	Hawk
Kestrel	

All other classes are open as normal.